

19th
PROJECT

CREDAI
Thiruvananthapuram



MANSIONS
Gayatri
APARTMENTS



a wonderful world



"We all need a special place.
A place to love, to live and to
laugh with our loved ones.
A place where we can live a
wholesome, positive life."



Sun drenched mornings. Verdant surroundings. Soothing spaces. Mansions Gayatri, as you might guess by now, is more than just a space to live your life.

It is designed to evoke a sense of well-being and positivity. In every inch of its well-laid out area. Inside and out.

From the impeccable location that overlooks serenity itself. To a host of amenities that covers your every need. To colours that soothe even the mind's eye. To a design that flows seamlessly, one functional space to the other.

Monuments to Mansions' expertise dot the landscape in the finest neighbourhoods of Thiruvananthapuram. And with a lineage that dates back to the eighties, it has experience that is hard to match across the state.

Presenting Mansions Gayatri. It has all that you look for in a Mansions home. And then some.

It transcends the ordinary!



Designed for your soul

An exquisite sense of design, well-laid out spaces,
aesthetics and functionality blended to perfection and an
uncompromising commitment to the finest makes

Mansions Gayatri a unique home.



While away your evenings watching the skies as
it is drained of its colours or catch the miracle of the sunrise
with your family. With homes at Mansions Gayatri,
wholesome living is the only way to live.



Life full of extras

It is the little things in life that makes a huge difference.

At Mansions Gayatri, a range of amenities awaits you that adds to your comfort and happiness.

Fully automatic elevator

Children's play area

Generator backup

Intercom facility

Health club

Roof top party area

Furnished entrance lobby

Access control with proximity

sensor card for main lobby

MANSIONS
Gayatri
APARTMENTS



Mansions is one of the leading real estate players in Kerala; a technocrat-headed, systems-driven group of highly qualified professionals, that swears by the values each of them have enshrined in themselves - professionalism to the core, quality that's more than a mere sales pitch and the firm belief that there's only one way to get the job done. And that's the right way.

Where life connects

Life is all about staying connected.

Located opp. St. Xaviers School, Thirumala-Peyad Road, Mansions Gayatri apartments is perfectly situated with access to key locations in the city.

Proximity to

Thirumala Jn. 2.5 km

SBT Head Office 3.5 km

HLL Head Office 4.0 km

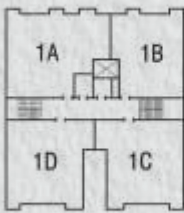
Vazhuthacaud Jn. 5.0 km

Shantiniketan School 3.5 km

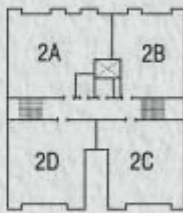


MANSIONS
Gayatri
APARTMENTS

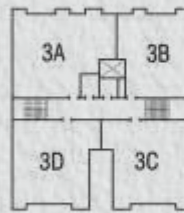
Allotment Plan



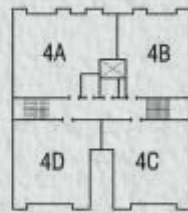
1ST FLOOR



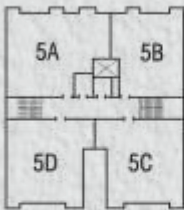
2ND FLOOR



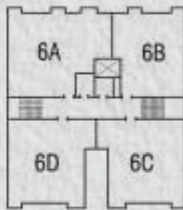
3RD FLOOR



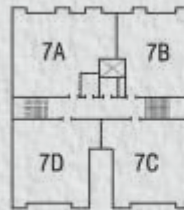
4TH FLOOR



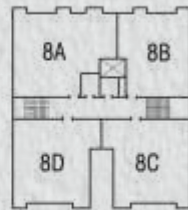
5TH FLOOR



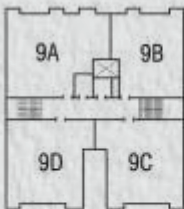
6TH FLOOR



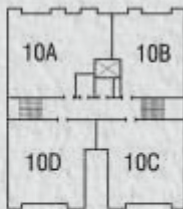
7TH FLOOR



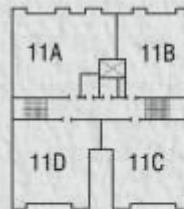
8TH FLOOR



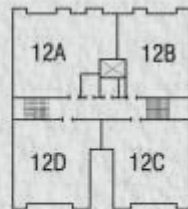
9TH FLOOR



10TH FLOOR



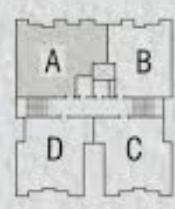
11TH FLOOR



12TH FLOOR



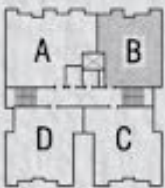
3 bedroom unit - A
(1st to 12th floor plan)
Built-up area - 1233 sq. ft.



- 1. Furniture and fixtures are only for indication and not part of the standard specifications
- 2. Dimensions may vary during construction



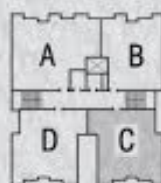
2 bedroom unit - B
(1st to 12th floor plan)
Built-up area - 957 sq. ft.



1. Furniture and fixtures are only for indication and not part of the standard specifications
2. Dimensions may vary during construction



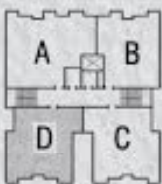
3 bedroom unit - C
(1st to 12th floor plan)
Built-up area - 1107 sq. ft.



1. Furniture and fixtures are only for indication and not part of the standard specifications
2. Dimensions may vary during construction



3 bedroom unit - D
(1st to 12th floor plan)
Built-up area - 1107 sq. ft.



1. Furniture and fixtures are only for indication and not part of the standard specifications
2. Dimensions may vary during construction

Specification of Construction

Structure

Earthquake resistant RCC frame; (designed for seismic zone III), 15cm thick hollow concrete block masonry for outer walls and 10cm thick concrete block/brick masonry for internal walls.

Doors

Teak wood panelled shutter with teak wood frame for front door. Factory moulded door shutters with hardwood frames for other doors. P.V.C/fibre moulded door frame and shutters for toilet doors. Moulded half glazed door for kitchen.

Windows

Powder coated aluminium glazed windows with safety grill.

Floor finish

General: Vitrified tile flooring.

Toilets: Anti-skid ceramic tiles.

Kitchen: Ceramic tiles.

Painting

Flat interiors: Acrylic emulsion paint for walls and ceiling over a coat of putty. Enamel paint for doors.

Exterior walls: Exterior emulsion paint.

Kitchen

Polished granite counter with stainless steel sink with single drain board. Glazed tiles up to 45cm height above granite counter.

Toilets

Glazed tiles up to 2.10m. White sanitary fixtures and CP fittings.

Plumbing

PPR pipes for concealed hot water lines inside toilets. UPVC Pipes for other water supply and drainage lines.

Water supply

Overhead water tank with pumping arrangement from bore well/open well and KWA water supply point in kitchen.

Fire fighting system

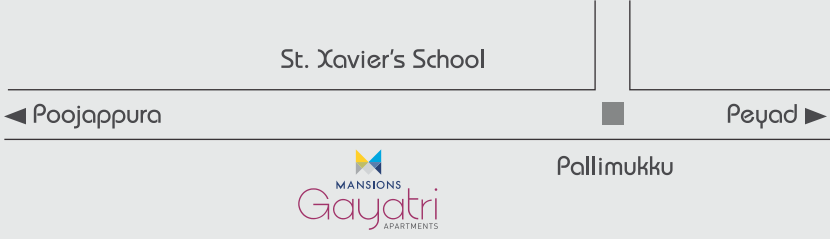
As per National Building code norms.

Electrical

Concealed three phase wiring with ISI marked superior quality PVC insulated copper cables with modular switches. Adequate light, fan and plug points. Provision for air-conditioner in master bedroom. Provision for water purifier, washing machine, mixer, refrigerator & microwave oven. Concealed conduit piping for cable/dish antenna in living/dining room and master bedroom.

Terms and Conditions

1. All payments must be by demand draft/local cheque in favour of 'Mansions' payable at Thiruvananthapuram.
2. On allotment of an apartment, an agreement will be executed between the owner of the land, the builder and the purchaser for the construction. The sale deed for the undivided share in the land will be registered on receipt of full payment and before handing over the apartment. Stamp duty, registration charges and related incidental expenses shall be borne by the purchaser.
3. An association of owners of the apartments will be formed to carry out the maintenance and other activities. Membership in the association is compulsory. The owners' association will carry out all necessary maintenance and repair of common areas, common installation and fittings. The association will also meet the expenses for common facilities and services. Maintenance charges/deposits as specified by the association will have to be paid regularly by each owner as decided by the association.
4. Statutory levies like Value Added Tax, Service Tax, Building Tax, Construction Workers Welfare Cess, etc. and water, electricity and drainage connection deposits and charges shall be paid by the purchaser. The proportionate share of the cost transformer, HT cabling and deposits are also to be paid by the purchaser. The builder will not be responsible for any delay in getting water/electric connection and door number from the concerned authorities.
5. All specifications and measurements in this brochure are subject to minor variations without notice. All such variations shall be purely at the discretion of the builder.
6. The builder reserves the right to cancel the allotment of the apartment subject to the liability of repayment of all advance received.
7. This brochure does not constitute a legal offer. The information contained herein does not constitute a contract, a part of contract or warranty.
8. All transactions are subject to the jurisdiction of the courts in Thiruvananthapuram.
9. The built-up area indicated is inclusive of proportionate share of common areas and wall thickness.



MANSIONS

a wonderful world

Kumaramangalam, Easwaravilasom Road,
Thiruvananthapuram - 695014.

Tel: 0471-2331160, 2334550, 3293582

THIRUVANANTHAPURAM: 93 88 44 63 33, 93 88 49 93 33

KOCHI: 93 88 44 31 83

Email: tvm@mansionsproperties.com

www.mansionsproperties.com